

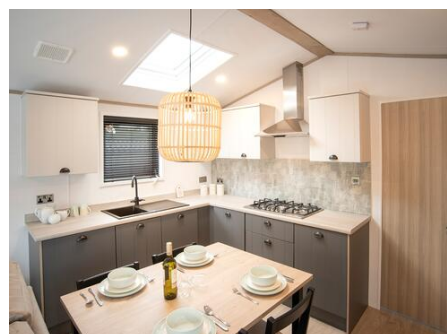
# Discover Parks

*Where life feels right*

## Atlas Sherwood Lodge. 2 Bedrooms 41 x 13

- Open plan living
- Clean design lines
- Great accent colours
- Light and spacious
- Side hallway
- Utility area
- Family bathroom
- En suite shower room

£76,995



### Atlas Sherwood Lodge

There is no denying it, the Sherwood Lodge is a firm favourite, and for good reason.

The side entrance presents a useful hallway. This has the added attraction of a utility space with washing machine. Moving to the open plan lounge the warmth of the colours is the immediate attraction, quickly followed by comfort and style. The large patio doors pulling in lots of natural light which shows off the clean design lines and rich accent colours.

The hallway also leads to a family bathroom - yes, with a bath! The bathroom also offer direct access to the guest twin bedroom - effectively making it a second en suite bedroom.

The master bedroom is spacious and practical with a stylish dressing table and en suite shower room.

With a holiday home this good, on a holiday park this good, it looks like the perfect combination!

For more information contact us directly on 01544 388312 or email us